



**Chicago  
Pneumatic**

# Accessories



[www.cp.com](http://www.cp.com)





**High-performance products.  
Designed for you !**

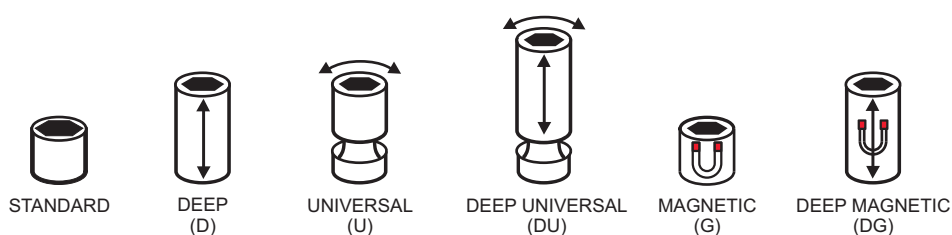


Since 1901 Chicago Pneumatic (CP) has been a global leader in the design, manufacture and distribution high-performance tools, compressors and associated accessories and workshop equipment.

Nobody understands better the benefits high quality sockets bring to the user's experience when working with high performance tools. Like all products from CP these sockets have been developed by working directly with mechanics and technicians and gives you everything you need in terms of product features and depth of the range ensuring you have the right socket to meet your needs every time.

To learn more about CP's dedication to pioneering design and high-performance technology, please visit [www.cp.com](http://www.cp.com)

	Square Drive (in)	Model Number	Part Number	# of Pieces	CONTENT
	1/4	SS2114	8940164436	14	4, 4.5, 5, 5.5, 6, 7, 8, 9,10,11,12,13,14 & 15mm
		SS2114D	8940164437	14	4, 4.5, 5, 5.5, 6, 7, 8, 9,10,11,12,13,14 & 15mm
		SS211U	8940164438	12	5, 5.5, 6, 7, 8, 9,10,11,12,13,14 & 15mm
		SS2112G	8940164439	12	5, 5.5, 6, 7, 8, 9,10,11,12,13,14 & 15mm
		SS2112DG	8940164440	12	5, 5.5, 6, 7, 8, 9,10,11,12,13,14 & 15mm
	3/8	SS3113	8940164446	13	7, 8, 9,10, 11,12,13,14,15, 16, 17, 18 & 19mm
		SS311D	8940164447	13	7, 8, 9,10, 11,12,13,14,15, 16, 17, 18 & 19mm
		SS3110U	8940164448	10	10,11,12,13,14,15, 16, 17, 18 & 19mm
		SS3110DU	8940164449	10	10,11,12,13,14,15, 16, 17, 18 & 19mm
		SS3113G	8940164450	13	7, 8, 9,10, 11,12,13,14,15, 16, 17, 18 & 19mm
		SS3113DG	8940164451	13	7, 8, 9,10, 11,12,13,14,15, 16, 17, 18 & 19mm
	1/2	SS4114	8940164458	14	10, 11,12,13,14,15, 16, 17, 18, 19, 21, 22, 26 & 27mm
		SS411D	8940164459	14	10, 11,12,13,14,15, 16, 17, 18, 19, 21, 22, 26 & 27mm
		SS4113U	8940164460	13	12,13,14,15, 16, 17, 18, 19, 21, 22, 23 & 24mm
		SS4113DU	8940164461	13	12,13,14,15, 16, 17, 18, 19, 21, 22, 23 & 24mm
		SS4112G	8940164462	12	10, 11, 12,13,14,15, 16, 17, 18, 19, 21, 20 & 21mm
		SS4112DG	8940164463	12	10, 11, 12,13,14,15, 16, 17, 18, 19, 21, 20 & 21mm
	3/4	SS618	8940164472	8	26, 27, 29, 30, 32, 35, 36 & 38mm
		SS618D	8940164473	8	26, 27, 29, 30, 32, 35, 36 & 38mm
	1	SS818	8940164476	8	27, 30, 32, 33, 35, 36, 38 & 41mm
		SS814D	8940166016	4	27, 32, 33, 36mm
		SS818D	8940164477	8	27, 30, 32, 33, 35, 36, 38 & 41mm

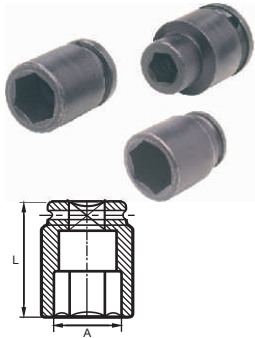


Note : for individual sockets please refer to imported socket catalogue available

**IMPACT SOCKETS**

*1/4" Square Drive*

(MOQ - 10 Nos.)



Part Number	A/ F A mm	Length L mm
V 9551 399	6	25
V 9552 399	7	25
V 9553 399	8	25
V 9559 399	9	25
V 9554 399	10	25
V 9555 399	11	25
V 9556 399	12	25
V 9557399	13	25
V 9558 399	14	28

**IMPACT SOCKETS**

*3/8" Square Drive*

(MOQ - 10 Nos.)

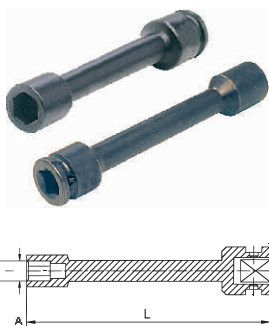


Part Number	A/ F A mm	Length L mm
V 9801 399	6	30
V 9803 399	7	30
V 9805 399	8	30
V 9807 399	9	30
V 9809 399	10	30
V 9811 399	11	30
V 9813 399	12	30
V 9815 399	13	30
V 9817 399	14	30
V 9819 399	15	32
V 9827 399	16	32
V 9821 399	17	32
V 9823 399	18	32
V 9825 399	19	32
V 9830 399	22	34
V 9802 399	6	60
V 9804 399	7	60
V 9806 399	8	60
V 9808 399	9	60
V 9810 399	10	60
V 9812 399	11	60
V 9814 399	12	60
V 9816 399	13	60
V 9818 399	14	60
V 9820 399	15	60
V 9828 399	16	60
V 9822 399	17	60
V 9824 399	18	60
V 9826 399	19	60

**IMPACT SOCKETS**

*Extension Sockets - 3/8" Square Drive*

(MOQ - 10 Nos.)



Part Number	A/ F A mm	Length L mm
V 9838 399	8	150
V 9839 399	9	150
V 9840 399	10	150
V 9841 399	11	150
V 9842 399	12	150
V 9843 399	13	150
V 9844 399	14	150
V 9845 399	15	150
V 9846 399	16	150
V 9847 399	17	150
V 9848 399	18	150
V 9849 399	19	150

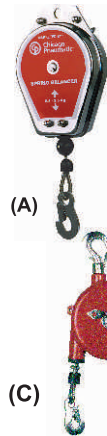
**LIFTING BAIL / SUSPENSION BAIL**

(MOQ - 10 Nos.)



Part Number	For Tool Model No.
V 5501 390	CP-721
V 5503 390	CP-724H / 726H
V 5502 390	CP-734H
V 5505 390	CP-749
V 5508 390	CP-825
V 5507 390	CP-828 / 7830
V 5510 390	CP-7733

**SPRING BALANCERS**



Part Number	Type	Capacity kg	Length m	Coating on wire rope
V 8590 399	A	1.5 - 2.5	1.5	PVC
V 5001 399	A	2.5 - 3.5	1.5	PVC
V 8591 399	B	2.5 - 3.5	3	PVC
V 8592 399	C	3.0 - 5.0	2	-
V 8596 399	Hose Reel cum Balancer			3-5kg

Type A : Sheet Metal Body  
Type B & C : Sheet Metal Body with Aluminium Back Cover

Note : for V 8591 399, 0.5 m wire rope will protrude out side spring balancer

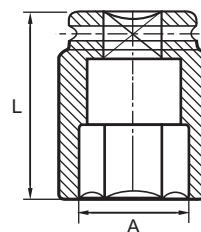
**IMPACT SOCKETS**

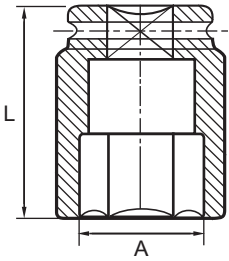
*1/2" Square Drive*

(MOQ - 10 Nos.)



Part Number	A/ F A mm	Length L mm
C 9745 720	8	38
C 9746 720	9	38
C 9747 720	10	38
C 9748 720	11	38
C 9749 720	12	38
C 9750 720	13	38
C 9751 720	14	38
C 9752 720	15	38
C 9753 720	16	38
C 9754 720	17	38
C 9755 720	18	40
C 9756 720	19	40
C 9757 720	20	40
C 9758 720	21	40
C 9759 720	22	40
C 9760 720	23	42
C 9761 720	24	42
C 9762 720	26	42
C 9763 720	27	45
C 9764 720	28	45
C 9870 399	30	45
C 9872 399	32	46
V 9851 399	8	80
V 9852 399	9	80
V 9853 399	10	80
V 9854 399	11	80
V 9855 399	12	80
V 9856 399	13	80
V 9857 399	14	80
V 9858 399	15	80

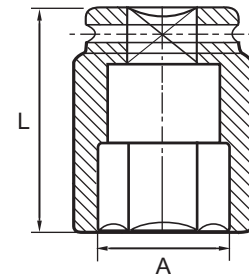


**IMPACT SOCKETS**
*1/2" Square Drive ( Contd... )*
**(MOQ - 10 Nos.)**


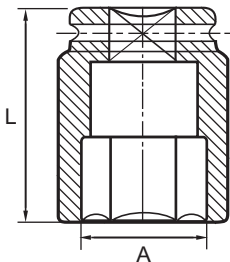
Part Number	A/ F A mm	Length L mm
V 9859 399	16	80
V 9860 399	17	80
V 9861 399	18	80
V 9862 399	19	80
V 9863 399	20	80
V 9864 399	21	80
V 9865 399	22	80
V 9866 399	23	80
V 9867 399	24	80
V 9868 399	27	80
V 9869 399	30	80
V 9871 399	32	80
V 9754 399	1/2"	38
V 9753 399	9/16"	38
V 9752 399	5/8"	38
V 9758 399	11/16"	38
V 9751 399	3/4"	40
V 9757 399	13/16"	40
V 9755 399	7/8"	40
V 9756 399	1. 1/8"	45
V 9759 399	1. 3/16"	45
V 9763 399	1/2"	80
V 9762 399	9/16"	80

**IMPACT SOCKETS**
*3/4" Square Drive ( Contd... )*
**(MOQ - 5 Nos.)**


Part Number	A/ F A mm	Length L mm
V 9967 399	30	90
V 9968 399	32	90
V 9969 399	36	90
V 9970 399	38	90
V 9971 399	41	90
V 9972 399	46	100
V 9973 399	50	100
V 9975 399	55	110
V 9977 399	60	120

**IMPACT SOCKETS**
*1" Square Drive*
**(MOQ - 5 Nos.)**


Part Number	A/ F A mm	Length L mm
V 9575 399	19	63
V 9577 399	20	63
V 9579 399	21	63
C 9777 741	22	63
V 9582 399	23	63
C 9776 741	24	63
C 9775 741	27	63
C 9774 741	30	63
C 9773 741	32	63
C 9725 761	36	66
C 9734 741	38	66
C 9726 761	41	68
C 9727 761	46	74
C 9728 761	50	76
C 9729 761	55	78
C 9730 761	60	81
C 9731 761	65	85
C 9732 761	70	90
C 9733 761	75	94
V 9598 399	80	100
V 9576 399	19	110
V 9578 399	20	110
V 9580 399	21	110
V 9581 399	22	110
V 9583 399	23	110
V 9584 399	24	110
V 9585 399	27	110
V 9586 399	30	110
V 9587 399	32	110
V 9588 399	36	110
V 9589 399	38	110
V 9590 399	41	110
V 9591 399	46	110
V 9592 399	50	110
V 9593 399	55	120
V 9594 399	60	120
V 9595 399	65	120
V 9596 399	70	130
V 9597 399	75	130
V 9599 399	80	140

**IMPACT SOCKETS**
*3/4" Square Drive*
**(MOQ - 5 Nos.)**


Part Number	A/ F A mm	Length L mm
V 9951 399	17	48
V 9953 399	18	48
V 9955 399	19	48
V 9957 399	20	50
V 9959 399	21	50
V 9735 740	22	50
V 9963 399	23	50
V 9736 740	24	50
V 9737 740	27	50
V 9738 740	30	50
V 9739 740	32	58
V 9740 740	36	60
V 9741 740	38	60
V 9742 740	41	66
V 9743 740	46	66
V 9744 740	50	70
V 9974 399	55	73
V 9976 399	60	78
V 9952 399	17	90
V 9954 399	18	90
V 9956 399	19	90
V 9958 399	20	90
V 9960 399	21	90
V 9961 399	22	90
V 9964 399	23	90
V 9965 399	24	90
V 9966 399	27	90

**SQUARE DRIVE ADAPTORS**



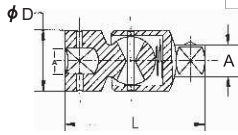
Part Number	Sq. Dr. Female	Sq. Dr. Male
V 9561 399	3/8"	1/4"
V 9562 399	1/2"	3/8"
V 9563 399	3/4"	1/2"
V 9564 399	1"	3/4"

**UNIVERSAL JOINT**

*Standard Length*



Part Number	Square Drive A	Diameter D mm	Length L mm
V 9302 399	3/8"	20	75
V 9312 399	1/2"	24	75
V 9322 399	3/4"	44	105
V 9332 399	1"	54	133

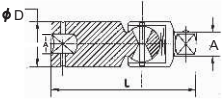


**UNIVERSAL JOINT**

*Extended Length*



Part Number	Square Drive A	Diameter D mm	Length L mm
V 9303 399	3/8"	20	140
V 9313 399	1/2"	24	140



**EXTENSION BARS**

(MOQ - 10 Nos.)



Part Number	Square Drive	Length m
V 9884 399	3/8"	75
V 9886 399	3/8"	100
V 9885 399	3/8"	125
V 9991 399	3/8"	150
V 9887 399	1/2"	75
V 9891 399	1/2"	100
V 9889 399	1/2"	150
V 9892 399	1/2"	200
V 9890 399	1/2"	300

**IMPACT SOCKETS - ALLEN HEAD** *3/8" Square Drive*



Part Number	A/ F mm	Length mm
V 9351 399	4	100
V 9352 399	5	100
V 9353 399	6	100
V 9354 399	7	100
V 9355 399	8	100

**ADAPTER - QUICK CHANGE TYPE**

(MOQ - 10 Nos.)

*For Screwdriver Application with Impact Wrenches*



Part Number	Description
V 9831 399	3/8" Square Drive-1/4" hex
V 8861 399	1/2" Square Drive-1/4" hex

Note : 1/2" sq. drive adaptor is for use with battery impact wrenches

**MAGNETIC INSERT BIT HOLDER**

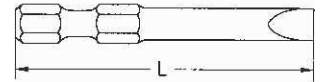
*For Screwdriver Application with Impact Wrenches*



Part Number	Description
V 8530 399	3/8" Square Drive-1/4" hex

**SLOTTED BITS - IMPACT TYPE** *Suitable for Impact Wrenches*

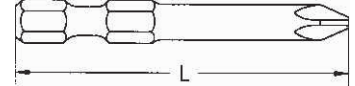
(MOQ - 10 Nos.)



Part Number	Length L mm	Blade Thickness mm	Bit Body Diameter mm
V 0505 399	69.8	0.9	6.35
V 0506 399	69.8	1.17	7.92
V 0507 399	69.8	1.27	9.14

**PHILIPS BITS - IMPACT TYPE** *Suitable for Impact Wrenches*

(MOQ - 10 Nos.)



Part Number	Length L mm	Point mm	Bit Body Diameter mm
V 1043 399	69.8	1	4.7
V 1053 399	69.8	2	4.7
V 1063 399	69.8	3	4.7
V 1054 399	50	2	-
V 1064 399	50	3	-
6158047130	50	2	-
6158047140	50	3	-

**GLOVES**



Description	Part Number
Impact glove Size : Large	894 015 8618
Impact glove Size : X-Lagre	894 015 8619
Carpal tunnel glove Size : Large	894 016 8343
Carpal tunnel glove Size : X-Large	894 016 8344

**MAGNETIC TOOL HOLDER**



Tool	Part Number
CP 9841	894 016 6664

### FILTER - REGULATOR - LUBRICATOR 3 piece



Part Number	Size BSPT
V 0304 396	1/2" female
V 0305 396	3/4" female

### FILTER - REGULATOR - LUBRICATOR 2 piece



	Part Number	Size BSPT
Miniature	V 0207 396	1/4" female
Design A	V 0316 396	1/2" female
Design A	V 9978 399	3/4" female
Design A	V 0319 396	1" female

### FILTER CUM REGULATOR



Part Number	Size BSPT
V 0313 396	1/2" female
V 0317 396*	1/2" female
V 0318 396*	3/4" female

\* with auto drain

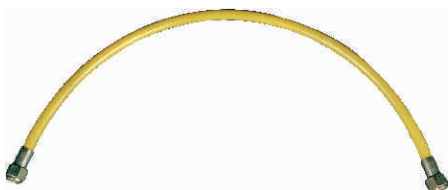
### AIR LINE LUBRICATOR



Part Number	Size BSPT
V 0366 396	1/2" female

### LEADER HOSE (8 mm ID x 12 mm OD)

Polyurethane - Yellow Colour



Part Number	End Connection	Length m
V 8560 396	1/4" NPT male - 3/8" BSP female	0.2
V 8561 396	1/4" NPT male - 3/8" BSP female	0.5
V 8562 396	3/8" BSP female	0.2
V 8563 396	3/8" BSP female	0.5
V 8564 396	1/2" BSP female	0.5
V 8565 396	1/2" BSP female	0.2

### RECOIL HOSES

Polyurethane - Yellow Colour



Part Number	ID x OD	End Fitting Size	Length m
V 8060 396	8x12mm	1/4"m x 3/8"m	3.65
V 8061 396	8x12mm	3/8"m x 3/8"m	3.65
V 8062 396	8x12mm	3/8"m x 1/2"m	3.65
V 8063 396	8x12mm	1/4"m x 3/8"m	5.18
V 8064 396	8x12mm	3/8"m x 3/8"m	5.18

Part Number	ID x OD	End Fitting Size	Length m
V 8065 396	8x12mm	3/8"m x 1/2"m	5.18
V 8066 396	8x12mm	1/4"m x 3/8"m	10.67
V 8067 396	8x12mm	3/8"m x 3/8"m	10.67
V 8068 396	8x12mm	3/8"m x 1/2"m	10.67
V 8069 396	10x14mm	3/8"m x 1/2"m	5.18
V 8070 396	10x14mm	1/2"m x 1/2"m	5.18
V 8071 396	10x14mm	3/8"m x 1/2"m	10.67
V 8072 396	10x14mm	1/2"m x 1/2"m	10.67
V 8073 396	11x16mm	3/8"m x 1/2"m	5.18
V 8074 396	11x16mm	1/2"m x 1/2"m	5.18
V 8075 396	11x16mm	3/8"m x 1/2"m	10.67
V 8076 396	11x16mm	1/2"m x 1/2"m	10.67
V 8077 396	5x8mm	1/4"m x 1/4"m	5.18

### HOSE REELS

Polyurethane Hose (8 mm ID x 12 mm OD)



Part Number	Hose Colour	Body Colour	End Connection	Length m
V 8001 396	Yellow	Amocil Grey	3/8" BSPT	4.5
V 8002 396	Yellow	Amocil Grey	1/4" NPT	4.5
V 8003 396	Yellow	Amocil Grey	3/8" BSPT	8
V8004 396	Yellow	Gray	1/4" NPT	8
V 8009 396	Yellow	Amocil Grey	3/8" BSPT	3.5
SAR12	Blue	Yellow	3/8" BSPT	12
SAR14	Black*	Black Composite	1/4" M	13.5

\* Rubber Hose

**REDUCERS** *BSPT female to BSPT male*

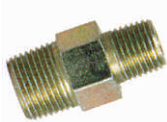

Part Number	End Connection BSPT	End Connection BSPT
V 8651 396	3/8" female	1/4" male
V 8654 396	1/2" female	3/8" male

**REDUCERS** *BSPT male to NPT male*

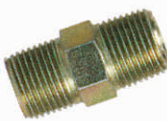

Part Number	End Connection BSPT	End Connection NPT
V 8331 396	3/8" male	1/4" male
V 8332 396	1/2" male	1/4" male
V 8333 396	1/2" male	3/8" male

**REDUCERS** *BSPT male to BSPT female*

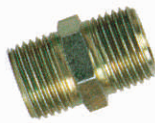

Part Number	End Connection BSPT	End Connection BSPT
V 8353 396	1/2" male	3/8" female
V 8354 396	3/4" male	1/2" female

**REDUCERS** *BSPT male to BSPT male*


Part Number	End Connection BSPT	End Connection BSPT
V 8381 396	3/8" male	1/4" male
V 8383 396	1/2" male	3/8" male
V 8384 396	3/4" male	1/2" male

**CONNECTORS** *BSPT male*


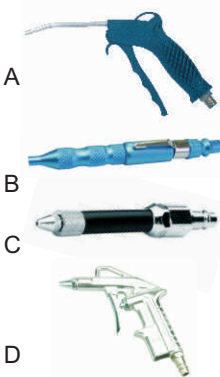
Part Number	End Connection BSPT
V 8522 396	3/8" male
V 8523 396	1/2" male

**CONNECTORS** *NPT male*


Part Number	End Connection NPT
V 8532 396	3/8" male
V 8533 396	1/2" male

**AIR REGULATOR**


Part Number	Description
8951011858	1/4" f x 1/4" m

**BLOW GUNS**


Part Number	Description
A - V 5701395	Plastic Body
8951070024	Plastic Body
B - 8951011024	Pocket Blow Gun
C - 8951011027	Bend it Valve
D - 8951070014	Aluminum Body

**QUICK RELEASE COUPLINGS AND ADAPTORS**


Part Number	Size
8951011784	1/4" M
8951011785	3/8" M
8951011786	1/2" M



8951011787	1/4" F
8951011788	3/8" F
8951011789	1/4" F



8951011790	6mm (Barbed end)
8951011791	9-10mm (Barbed end)
8951011792	13mm (Barbed end)



8951011819	3/8" F 2Way
8951011820	3/8" F 3 Way



8951011801	1/4" M x 6mm (Barbed)
8951011802	1/4" M x 9mm (Barbed)
8951011803	3/8" M x 9mm (Barbed)
8951011804	3/8" M x 13mm (Barbed)
8951011805	1/2" M x 13mm (Barbed)
8951011806	1/2" M x 9mm (Barbed)



8951011809	1/4" M
8951011810	3/8" M
8951011811	1/2" M



8951011812	1/4" F
8951011813	3/8" F
8951011814	1/2" F

**PLUG FOR HOSES**


Product Part Number	Size
8951011795	6mm (Barbed)
8951011796	9mm (Barbed)
8951011797	13mm (Barbed)

**HOSE CONNECTOR**


Product Part Number	Size
8951011798	6mm (Barbed)
8951011799	9mm (Barbed)
8951011800	13mm (Barbed)

**SANDING PADS**

**For CP767, CP768 & CP7268**



Molded edge pad with dimple free surface prevents grit buildup for a smooth finish. Accepts pressure - sensitive adhesive or standard sandpaper

<b>KF125457</b>
2 3/4" x 17 1/2"

**For CP778**



<b>KF137216</b>
3" Back-up Pad

<b>KF137215</b>
4" Back-up Pad

<b>KF137214</b>
5" Back-up Pad

**For CP865 & CP869**



Flexible edge sanding pad

<b>KF129587</b>
7" Pad & Nut

<b>KF129586</b>
Locknut Only

5/8" - 11 N.C. THD.

**SANDING PADS**



Heavy duty pad, aluminium backed with flexible molded edge for smooth feather edging.

8940158690	150mm (6") Velcro Pad	6 holes
8940158621	150mm (6") PSA Pad	6 holes
8940158689	150mm (6") Velcro Pad	
8940158351	150mm (6") PSA Pad	
8940158352	Pad Spanner	26mm
KF140658	150mm (6") PSA Pad	
CA149405	150mm (6") Velcro Pad	
CA142413	150mm (6") PSA Pad	6 Hole Dust Ext
CA149784	150mm (6") Velcro Pad	6 Hole Dust Ext

Spindle 5/16"-24

**BACKING PADS**

**For CP7200S / CP7201P**

8940158334	50mm Ø 1/4"
8940158330	75mm Ø 1/4"

**For CP7202D**

CA 158102	75mm Ø 1/4"
-----------	-------------

**REINFORCED RESINOID WHEEL**

**For CP861 & CP874**



Package of 5 Wheels

<b>CA155312</b>
3 x 1/16" x 3/8"

**MINI SANDER / POLISHER PADS & PAPER**

<b>8940158677</b>	50mm 320 Grit (50 Pieces)	<b>CP7200S</b>
<b>8940158678</b>	50mm 400 Grit (50 Pieces)	<b>CP7200S</b>
<b>8940158679</b>	50mm 600 Grit (50 Pieces)	<b>CP7200S</b>
<b>8940158680</b>	75mm 320 Grit (50 Pieces)	<b>CP7200S</b>
<b>8940158681</b>	75mm 400 Grit (50 Pieces)	<b>CP7200S</b>
<b>8940158682</b>	75mm 600 Grit (50 Pieces)	<b>CP7200S</b>

<b>8940161712</b>	75mm Sanding Disc 60 Grit (5 Pieces)	<b>CP7202D</b>
<b>8940161713</b>	75mm Sanding Disc 80 Grit (5 Pieces)	<b>CP7202D</b>
<b>8940161714</b>	75mm Sanding Disc 100 Grit (5 Pieces)	<b>CP7202D</b>
<b>8940161715</b>	75mm Sanding Disc 120 Grit (5 Pieces)	<b>CP7202D</b>
<b>8940161716</b>	75mm Surface Prep Pad (fine) (5 Pieces)	<b>CP7202D</b>
<b>8940161717</b>	75mm Surface Prep Pad (medium) (5 Pieces)	<b>CP7202D</b>
<b>8940161718</b>	75mm Surface Prep Pad (course) (5 Pieces)	<b>CP7202D</b>

**REAR EXHAUST HOSE ASSEMBLY**

**For CP860E & CP 860ESE - CA127175**



Includes :

<b>CA046270</b>
6' Whip Hose
<b>KF127210</b>
5' Exhaust Overhose
<b>KF127211</b>
Attachment Ferule

**POLISHING PADS**

**For CP865P, CP869P, CP8210E & CP7201P**



KF125423	203mm Polishing Pads	CP865P / CP869P
CA158108	77mm Soft Polishing Pads	CP7201P White
CA158109	77mm Hard Polishing Pads	CP7201P Yellow
CA158110	77mm Buffing Pads	CP7201P Wool
8940158772	50mm Soft Polishing Pads	CP7201P White
8940158773	50mm Hard Buffing Pads	CP7201P Yellow
8940158774	50mm Buffing Pads	CP7201P Wool
8940158546	Backing Pad	CP8210E
8940158547	Foam Pad - Soft	CP8210E
8940158548	Foam Pad - Hard	CP8210E
8940158549	Polishing Foam	CP8210E



**IMPACT WRENCH TUNE-UP AND REPAIR KITS**

**IMPACT WRENCH TUNE-UP AND REPAIR KITS**

Tool Number	Tune-up Kit	Repair Kit
CP719 / 719QC	CA157285	CA 157286
CP721	CA118880	
CP7722	894 016 4482	
CP724H	CA155218	CA155310
CP726H	CA155309	CA155311
CP734H	CA147716	CA147717
CP7735H/7735H/Quiet	894 016 7479	8940167480
CP7620	894 016 8267	
CP9540-B	CA157792	CA157793
CP7740	894 016 2408	894 016 2410
CP7740-2	894 016 2408	894 016 3047
CP7733	894 015 8860	894 015 8861
CP7733-2	894 015 8860	894 015 8862
CP749	894 015 8635	894 015 8636
CP749-2	CA148616	CA155967
CP7749/7749-2	894 016 7481	894 016 7482
CP7750	894 015 8371	894 015 8372
CP7750-2	894 015 8371	894 015 8373
CP7763	894 016 2925	894 016 2927
CP7763-6	894 016 2925	894 016 2927
CP7773	894 016 2926	894 016 2928
CP7773-6	894 016 2926	894 016 2929
CP894	CA149855	894 016 2930
CP7774/7774-6	894 016 2693	
CP796	CA126992	
CP897/897-6	CA157909	
CP7778/7778-6/SP-6	894 016 2816	
CP7775/7775-6/SP-6	894 016 2206	
CP5000	CA148687	

**HAMMER ACCESSORIES FOR CP-711HEX HAMMER**

Index No	Part No.	Length mm	Description
1	CA-1 55778	165	Hex Rivet Cutter
2	CA-1 55780	178	Hex Angle Scaling Chisel
3	CA-1 55782	178	Hex Diamond Point Chisel
4	CA-1 55784	165	Hex Twin Blade Panel (pipe) Cutter
5	CA-1 55786	178	Hex Cold Chisel
6	CA-1 55790	178	Hex Straight Punch
7	CA-1 55792	178	Hex Spot Weld Splitter
8	CA-1 57107	178	Hex Tapered Punch
SET	CA-1 55806		Rivet Cutter, Twin Blade Cutter, Cold Chisel, Straight Punch, Tapered Punch

**RETAINERS 0.401" (10.2MM)**

Model	Description	Part No.
CP711, CP714 & CP715	Bee hive retainer	A046096
CP711	Quick change retainer	A046095
CP714 & CP715	Zip-quick retainer	A0646094
CP711, CP714 & CP715	Quick charge retainer	894 015 8524
CP711, CP714 & CP715 & CP7110	Posi lock retainer	A121721

**HAMMER ACCESSORIES FOR 0.401" SHANK HAMMER**
**FOR CP711 / CP7110 / CP715 / CP714 / CP9537**


Index No	Part No.	Length mm	Description
1	A-046050	165	Rivet Cutter
2	A-046063	178	Angle Scaling Chisel
3	A-046064	178	Diamond Point Chisel
4	A-046071	165	Twin Blade Panel (pipe) Cutter
5	A-046073	178	Cold Chisel
6	A-046074	178	Straight Punch
7	A-046075	178	Spot Weld Splitter
8	A-046078	178	Tapered Punch
9	A-046094	-	Zip-Quick Retainer
10	A-046095	-	Quick-Change Retainer
11	A-046096	-	Bee-Hive Retainer
12	A-121721	-	Posi-Lok Retainer
SET	CA-155807	-	Rivet Cutter, Twin Blade Cutter, Cold Chisel, Straight Punch, Tapered Punch

**HAMMER ACCESSORIES FOR 0.498" SHANK HAMMER**


Index No	Part No.	Length mm	Description
1	A-047050	165	Rivet Cutter
2	A-047051	178	Wide Cutting Chisel
3	A-047052	178	Bushing Splitter
4	A-047057	178	Universal Joint & Tie Rod Tool
5	A-047059	178	1" Separator Fork
-	A-047060	178	3/4" Separator Fork
-	A-047061	178	1-1/4" Separator Fork
6	A-047071	178	Twin Blade Cutter
7	A-047073	165	Cold Chisel
8	A-047074	178	Straight Punch
9	A-047078	80	Tapered Punch
10	A-047091	-	1-3/4" Smoothing Hammer
11	A-047095	-	Quick-Change Retainer
12	A-047096	-	Bee-Hive Retainer

**ACCESSORIES FOR CP 7120**

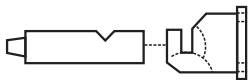
Part No.	Length mm	Description
8940159860	19 x 3	Steel Needles
8940162308	50	Scraper
WP1 23994	-	Blank
WP123995	6	Diamond Point
WP123996	15.9	Chisel
WP123998	35	Wide
WP123999	35	Angle Scaling

**COLLET ADAPTER**


For any 1/4" Collet Die Grinder  
Allows use of 1/8" shank burrs.  
**C123029**

**GRINDER ACCESSORIES**

Part No.	Description
C136898	4" Guard
KF141860	5" Guard
C138512	Wheel Collar
C136926	Spanner
C136927	Wheel Nut Wrench
8940163043	Hoses for CP7556/CP7562/CP7563

**PUNCH SET & DIE FOR CP835**


Part No.	Description
<b>KF137310</b>	Punch Set
<b>KF137273</b>	Die

**SCREWDRIVER KIT**


For use with all Air Drill! Has Quick-Change Slip Chuck, three Phillips Bits and two Slotted Bits.

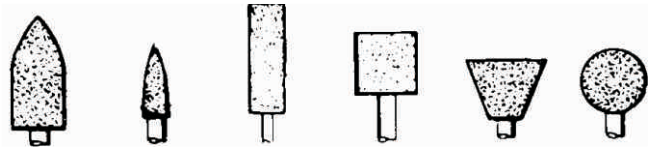
**CA155826**

**BURRS & RASPS**


**C056721** **C056722** **KF137769** **KF137770** **KF137771** **KF137772**  
Pencil Ball Barrel Pencil

1/4" CARBIDE BURRS

1/4" CARBIDE BRASPS

**MOUNTED WHEELS**


**C085067** 38,050rpm **C085068** 50,050rpm **C085074** 31,070rpm **C085075** 32,950rpm **C085070** 27,780rpm **C085069** 35,510rpm

GENERAL PURPOSE MOUNTED WHEELS

**ACCESSORIES FOR RATCHETS**

TOOL NUMBER	TUNE-UP KIT	REPLACEMENT HEAD	PROTECTIVE COVER
CP824	CA1 57871	CA1 57872	CA1 57928
CP824T	CA1 57871	CA1 57873	CA1 57928
CP826	CA1 55033	CA1 55034	CA1 54993
CP826T	CA1 55033	CA1 55035	CA1 54993
CP828H		CA1 55084	CA1 33961
D/N & E	CA1 55086	CA1 55085	CA1 33961
CP828HA & K	CA1 55086	CA1 55085	CA1 33961
CP886	CA146437	CA1 46436	CA1 33961
CP886H	CA146437	CA1 47668	CA1 33961
CP7830Q	8940158552	8940158613	CA1 47993
CP7830H	8940158552	8940158614	CA1 47993

**IMPACT PROTECTOR COVERS**


Tool Number	Part Number
CP724, CP726	CA146522
CP734H	CA129405
CP749, CP749-2	CA155537
CP772H	CA124745
CP797	CA139818
CP7733, CP7733-2	8940158949
CP7775, CP7775-2	8940162416
CP7763,	8940163076
CP7749	8940167487
CP7774 (All)	8940162785

**CORDLESS TOOLS ACCESSORIES**



Model	Battery	Charger
CP8738 U	8940163531 - 12 Ni-Cd	8940163528
CP8738 UL	8940163533 - 10.8V Li-Ion	8940163528
CP8748 U	8940163534 - 19.2V Nicd	8940163528
CP8748 UL	8940163532 - 18V Li-Ion	8940163528
CP8335 U	8940163531 - 12V Ni-Cd	8940163528
CP8335 UL	8940163533 - 10.8V Li-Ion	8940163528

**AIR TOOL LUBRICANTS**

AIROILENE OIL		IMPACT CLUTCH GREASE		MOLY-BASED IMPACT CLUTCH GREASE		GEAR GREASE		PROTECTO-LUBE	
Highly refined oil for use in clean tools. Use in air line lubricators and in integral oil reservoirs provided on some tools		For clutch mechanisms of grease lubricated CP impact wrenches		For clutch mechanisms of grease lubricated CP impact wrenches with 2Jaw clutches.		For Use in gear cases of rotary tools		Cleans out gum and deposits in air tools.	
Part No.	Size Can gal. (l.)	Part No.	Size Can lb. (kg.)	Part No.	Size Tube	Part No.	Size Can lb. (kg.)	Part No.	Size Can lb. (kg.)
P-089507	1 (3.8)	C 131689	7 1/2 (3.4)	CA 131898	14 oz.	CA-131689	7 1/2 (3.4)	CA-000046 CA-149661	1pt. (.473) 4 oz.



Part Number	Description
8940158455	4 oz. Re-closable Tube
8940158456	14 oz. Cartridge
8940158457	7 lb. Pail w/removable lid

Grease Gun	
	3 Ounce Capacity
	Uses Molybased Clutch (Part Number CA 131898 14oz.)
C098689	

This new grease adheres much better to anvil and surfaces in impact wrench clutches during lab tests, which translates into improved long-term lubrication, less frequent re-greasing and substantially improved component life.

**DUST EXTRACTION KIT FOR SELF GENERATE VACUUM**


Model	Description	Part Number
CP3512/13, CP7225/55/15 SV(E)	Dust extraction kit (incl. 1 dust bag & its dust hose)	205 052 2453
CP3512/13, CP7225/55/15 SV(E)	Dust bag set (incl. 5 dust bags)	205 052 3203
CP3512/13, CP7225/55/15 SV(E)	Dust bag set (incl. 1 dust bags)	205 052 3063

**VACUUM HOSE ADAPTATOR FOR CENTRAL VACUUM SANDERS**

Model	Description	Part Number
CP7225/55CVE-3, CP3514/15	Vacuum hose adaptor Ø 1" (25mm)/	615 350 1170
CP7225/55/15CV(E), CP7255/15HCVE	Ø 1 1/4" (32mm)	
CP7225/55CVE-3, CP3514/15	Vacuum hose adaptor Ø 1" (25mm)/	615 804 4480
CP7225/55/15CV(E), CP7255/15HCVE	Ø 1 1/8" (28mm)	

**BELT SANDERS - BAGS OF 5 BELTS**


Model	Description	Part Number
CP858	Belts 60 Grit, 3/8"x13" (10x330mm)	CA156714
CP858	Belts 80 Grit, 3/8"x13" (10x330mm)	CA156722
CP858	Belts 120 Grit, 3/8"x13" (10x330mm)	CA156735
CP9779	Belts 60 Grit, 3/8"x13" (10x330mm)	205 050 4443
CP9779	Belts 80 Grit, 3/8"x13" (10x330mm)	205 050 4453
CP9779	Belts 100 Grit, 3/8"x13" (10x330mm)	205 050 4463
CP9779	Belts 120 Grit, 3/8"x13" (10x330mm)	205 050 4473
CP9780	Belts 60 Grit, 3/8"x20.4" (20x520mm)	205 050 4483
CP9780	Belts 80 Grit, 3/8"x20.4" (20x520mm)	205 050 4493
CP9780	Belts 100 Grit, 3/8"x20.4" (20x520mm)	205 050 4503
CP9780	Belts 120 Grit, 3/8"x13" (10x330mm)	205 050 4413



www.cp.com

**SAW BLADES**



Part No.	Description	
CA146719	18T Saw blades (5pcs)	CP7900/CP881
CA146720	24T Saw blades (5pcs)	CP7900/CP881
CA146721	32T Saw blades (5pcs)	CP7900/CP881
8940158775	18T Saw blades (5pcs)	CP7901
8940158776	24T Saw blades (5pcs)	CP7901
8940158777	32T Saw blades (5pcs)	CP7901

**DRILL CHUCKS**



Model	Capacity in mm	Thread Mount	Chuck Part No.	Key Part No.
CP7300	1/4 6	3/8-24	894 015 8751	205 0497 003
CP785	3/8 10	3/8-24	KF 124595	C142411
CP9285, CP9790, CP789R, CP879 CP887	3/8 10	3/8-24	205 048 6973	C142411
CP9286, CP9789 CP785H, CP789HR	1/2 13	3/8-24	205 048 6963	
CP7300RQC	1/4 6	3/8-24	894 016 2272	Keyless
CP785Q	3/8 10	3/8-24	CA 146490	Keyless
CP9287, CP9792	3/8 10	3/8-24	205 050 2063	Keyless
CP9288, CP9791	1/2 13	3/8-24	205 050 2073	Keyless

**Note :**

Part No. starting from V / C ..... are PTAT Accessories

Part No. starting from 89510 ..... are Rodcraft Accessories

Part No. starting from 89401 / CA / KF / P / C / 205 ..... are CP Imported Accessories



**Chicago Pneumatic**

Chicago Pneumatic Sales  
Rushabh, 2nd Floor, Ghodbunder Road,  
Near American Heart Institute,  
Thane (W) - 400 607

**Mumbai**  
+91 98202 15389

**Gurgaon**  
+91 98713 89795

**Ahmedabad**  
+91 93276 11151

**Indore**  
+91 94311 17110

**Kolkata**  
+91 97484 82734

**Pune**  
+91 99701 65258

**Jamshedpur**  
+91 98351 82734

**Chennai**  
+91 98410 33320

**Bangalore**  
+91 98451 19570

**Lucknow**  
+91 98390 68429